

Mail or fax registration to:

**Rail Training (Attn: Diana Webb)**

Center for Transportation Research

The University of Tennessee

309 Conference Center

Knoxville, TN 37996-4133

Tel: (865) 974-5255 Fax: (865) 974-3889

**Railroad Track Inspection**

**& Safety Standards**

Chattanooga, TN • March 12-16, 2012

Name \_\_\_\_\_

Title \_\_\_\_\_

Organization \_\_\_\_\_

Address \_\_\_\_\_

City \_\_\_\_\_

State \_\_\_\_\_ Zip \_\_\_\_\_

Tel \_\_\_\_\_ Fax \_\_\_\_\_

Email \_\_\_\_\_

**Payment of \$625 by (choose one):**

\_\_\_ Check payable to The University of Tennessee

\_\_\_ Bill/Invoice my organization

\_\_\_ Credit Card: \_\_\_ Visa \_\_\_ MasterCard

Cardholder's Name

Cardholder's Signature

Card Number

Expires

# Railroad Track Inspection

## & Safety Standards

The workshop begins each day at 8:00am. Activities on days 1-4 end no later than 5:00pm; day 5 will be completed by 11:00am.

**Day 1**

Introduction and overview

Part 213 Subpart A-General

Part 213 Subpart B-Roadbed

Part 213 Subpart C-Track Geometry

**Day 2**

Part 213 Subpart C-Track Geometry (cont.)

Part 213 Subpart D-Track Structure

Field Exercises - Geometry Measurement

**Day 3**

Part 213 Subpart D-Track Structure (cont.)

Part 213 Subpart E-Track Appliances

Part 213 Subpart F-Inspection

**Day 4**

The Inspection Process

Field Inspection and Review

**Day 5**

Review and Conclusion

CEU credits are available for those completing the course. All attendees who successfully finish the course receive a certificate of completion.

Call 865-974-5255 if you are interested in hosting the course in your area.

UTK is an EEO/AA/Title VI/Title IX/Section 504/ADA/ADEA Employer. PAN: R01-1313-132-021-12

# Railroad Track Inspection & Safety Standards

March 12-16, 2012

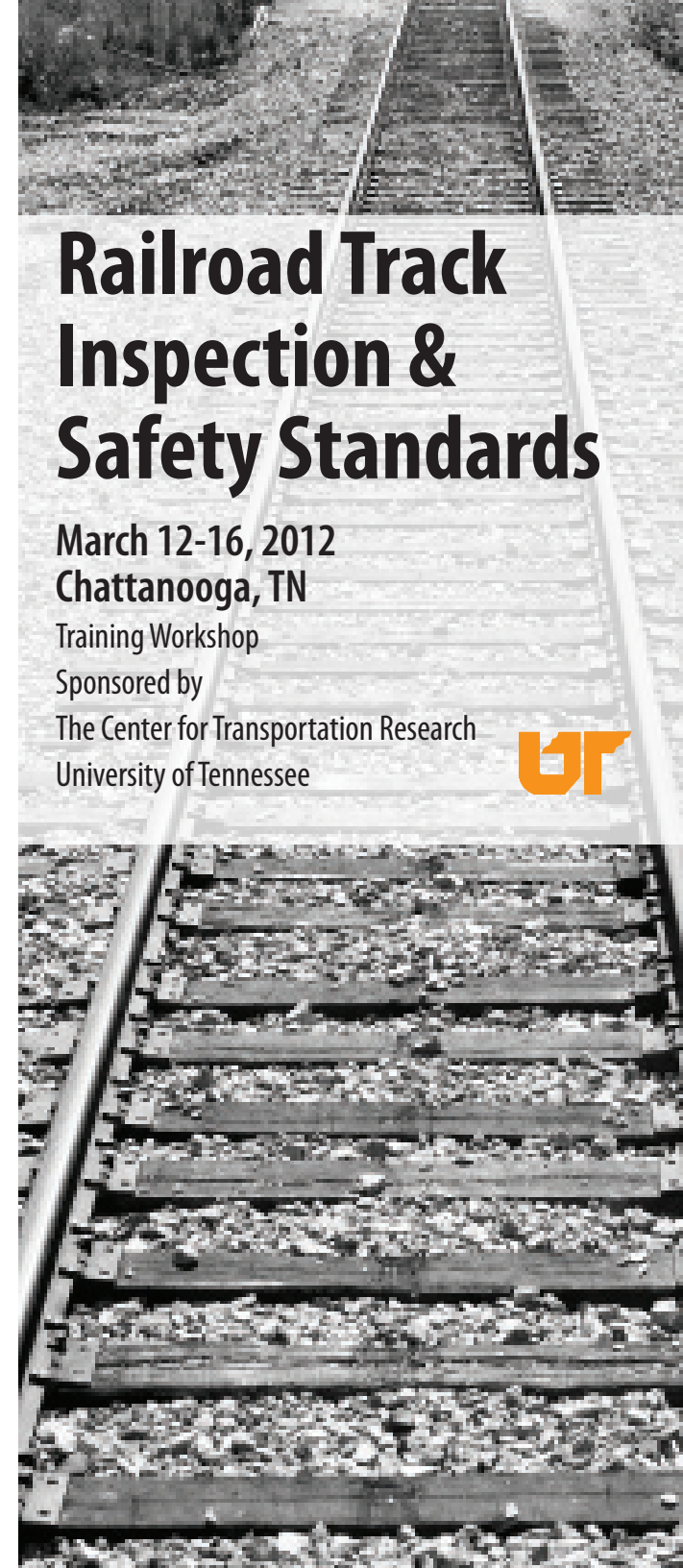
Chattanooga, TN

Training Workshop

Sponsored by

The Center for Transportation Research

University of Tennessee



## Overview

Track is the foundation of the railroad's physical plant. Although railroad track components are relatively simple in concept, they interact in a complex fashion to form a system capable of withstanding the extremely large forces applied by rail vehicles. Safe and reliable train operations rely upon the track system remaining within established specifications. Because the combined effects of traffic and environment degrade track, regular inspection is essential to identify defects and initiate remedial action before problems develop. This course describes track defects and acceptable corrective actions, presents a recommended methodology for conducting inspections, and discusses in depth the Federal Track Safety Standards in 49 CFR, Part 213.

## Objectives and Benefits

In this class, you will

- learn how to organize, conduct, and document track inspections;
- learn how to measure track parameters;
- develop a clear understanding of the Federal Track Safety Standards and the FRA track inspection process; and
- learn how to use inspection results to identify track maintenance needs and plan maintenance activities.

This course is the only comprehensive course on track inspection providing sufficient time to discuss this complex subject in detail and to demonstrate the measurement techniques needed. Hundreds of attendees through the years have increased their understanding of the track inspection process as a result of this class.

## Date & Location

*March 12-16, 2012, Chattanooga, TN*

This 4-½ day workshop includes classroom lecture, exercises and field track inspection activities. Directions to the training facility will be provided upon registration. If you need additional information, please call 865-974-5255.

## Fee

The course registration of \$625 includes course materials and refreshments. Attendees are responsible for meals and lodging. Registrants will be provided information on available lodging in the course vicinity.

## Cancellation

**If you cannot attend, notification by February 27, 2012 is required for full refund.** Credit will be given for future courses for those unable to make the cancellation deadline. There will be no refunds for no-shows. You may enroll a substitute at any time before the course starts.

## Equipment

Because this workshop is designed to be hands-on, registrants should bring approved safety footwear, eye protection and hard hats for field track inspection activities. Attendees who possess track inspection tools, such as a track level or stringline, are encouraged to bring them. Pocket calculators will be helpful in certain exercises. Field exercises are conducted rain or shine.

## Who Should Attend

Track inspection personnel from shortline, regional, and Class I railroads; railroad contractors and consultants; state and local government officials associated with railroad operation, finance, and regulation; and railway engineers have all benefited from attending this workshop.

## Limited Enrollment

To insure that the facilities will comfortably accommodate all participants, this workshop will be limited to 25 participants.

## Instructor

*David B. Clarke, Ph.D., P.E.*

Dr. Clarke is currently Director of both the Tennessee Transportation Assistance Program (TTAP) and the Center for Transportation Research. He is a research associate professor in the Department of Civil and Environmental Engineering at the University of Tennessee. His 29 years of experience encompass a variety of railroad related design, inspection, research and education activities. He has taught railway related courses including this one, to college students and professionals since 1990. Dr. Clarke is well versed in the Federal Track Safety Standards covered in this course, and is frequently engaged as an expert to assess track conditions. As a licensed civil engineer, Dr. Clarke prepares specifications and designs for railroad track construction and maintenance. He is a licensed civil engineer in South Carolina and Tennessee and is active in AREMA, ASCE and TRB.